

Reno County

Community Health Improvement Plan

2022



## Table of Contents

Introduction .....	3
Addressing the Conditions that Affect Everyone’s Health.....	3
Priority Areas and Strategies .....	5
Priority Area 1: Understanding Substance Misuse .....	5
Priority Area 2: Mental Health .....	7
Priority Area: 3 Access to Care.....	9
Priority Area 4: Childcare .....	10
Strategies Priority Area 1: Substance Use.....	11
Strategies Priority Area 2: Mental Health.....	14
Strategies Priority Area 3: Access to Care.....	17
Strategies Priority 4: Child Care .....	18
Monitoring and Evaluation .....	19
Summary and Next Steps.....	19
Executive Summary.....	19
Appendix A.....	20
Demographics .....	20
Socioeconomic Factors .....	22
Food Environment .....	24
Appendix B.....	26
Overview of the 2022 Community Health Assessment .....	26

## Table of Figures

Figure 1: A Public Health Framework for Reducing Health Inequities.....	4
Figure 2: Opioid Prescription Rate .....	5
Figure 3: Stimulant Prescription Rate .....	6
Figure 4: Sedative Prescription Rate .....	6
Figure 5: Percentage of Adults by Tract with Poor Mental Health for more than 14 Days (2019) .....	7
Figure 6: Mental Behavior Hospital Admissions Rate (2016-2018) .....	8
Figure 7: Health Care & Insurance Statistics .....	9
Figure 8: Pay and Education Childcare Inequities.....	10
Figure 9: Race/Ethnicity in Reno County .....	20
Figure 10: Demographics & Trends in Reno County .....	21
Figure 11: Reno County Key Facts.....	21
Figure 12: Census Tracts - 20 Percent or More of Population Living in Poverty .....	22
Figure 13: Census Tract - 20 Percent or More of Population with Less Than a High School Diploma.....	23
Figure 14: Food & Grocery Spending .....	25
Figure 15: CHA - Overall Concerns Facing Reno County .....	26
Figure 16: CHA - Health Concerns Facing Reno County .....	27
Figure 17: CHA - School Concerns Facing Reno County .....	27
Figure 18: CHA - Household Struggles with Mental Health .....	28

## Introduction

Imagine if everyone in Reno County had what they needed to be healthy. A place where kids can play outside in safe parks that are fun and enriching. A place where families can gather at restaurants without having to breathe dirty smoke. A place where the health of our community grows generation after generation. This is the future we can create together.

Health is like the fuel for our lives. It helps us enjoy our days, achieve our dreams, and connect with our loved ones. But good health doesn't just happen—it's created by the conditions that surround us where we live, learn, work, and play. These conditions shape the decisions we make, the opportunities we have, and the exposures we encounter. By coming together, we can take the pulse of our community and find solutions that work for us and bring out our strengths.

The Community Health Improvement Plan, or CHIP, is an important part of this vision. It's a team made up of people from our community – educators, businesspeople, family members, older adults health care professionals, and public health professionals. This plan represents our collaborative work to create a vision and a plan to improve the health of Reno County.

But we need your help to make this a reality. Whether you're a student, a teacher, a parent, or a business owner – you can make a difference. We need your energy, your ideas, and your passion to make our community the healthiest it can be for everyone. So come join us. Be a part of this exciting journey. Let's strive to make our community a place where good health is within reach for all. We believe that a healthy life is something everyone should have the opportunity to enjoy. Together, we can make a difference. Let's start today!

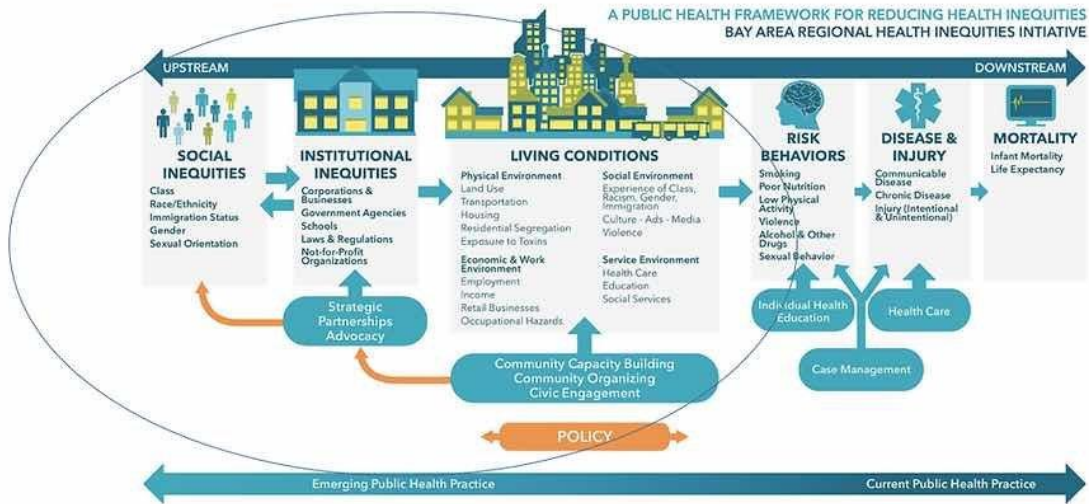
## Addressing the Conditions that Affect Everyone's Health

Good health begins where we live, learn, work and play. Stable housing, quality schools, access to good jobs, neighborhood safety, and culturally competent healthcare are important influences within communities.

The public health framework shows us how different factors contribute to community wide health disparities and inequities. For example, people who don't have access to grocery stores with healthy foods are less likely to have good nutrition. That raises their risk of health conditions like heart disease, diabetes, and obesity — and even lowers life expectancy relative to people who do have access to healthy foods.

We are aiming to support Reno County with the data, knowledge, and tools for businesses, health care entities, and not-for-profits to expand their reach to all populations so that everyone can live the healthiest life possible.

Figure 1: A Public Health Framework for Reducing Health Inequities<sup>1</sup>



### The Role of the Reno County Health Department

- Public health experts are trained to diagnose the health of a community. They listen to people who know their community best and draw on science and data to recognize patterns and problems.
- In the U.S., we spend so much time and money on health care, but we're not getting healthier. That's because we wait to treat people until after they're sick or injured.
- Public health is designed to prevent each of us from getting sick or injured in the first place. Clean air, pure water, safe neighborhoods, and more—it's the mission of public health to make sure our cities, communities, and country have what we need to stay healthy.
- Public health experts bring together everyone who has a role to play in their community's health—schools, businesses, government agencies, and others—to stop health threats before they start.

<https://www.phrases.org/tools/strategic-messaging/>

<sup>1</sup> Framework — BARHII - Bay Area Regional Health Inequities Initiative

## Priority Areas and Strategies

In 2022 a Community Health Assessment (CHA) was completed by Reno County residents with the help of the Reno County Health Department and volunteers who went door to door to talk with people. There were four priority areas that came out of that assessment as you can see at <https://renocountycha-reno.hub.arcgis.com/>. As we, as a community, make progress on the identified priority areas, we will be able to see the results within the strategies that were brought out by focus groups, persons with lived experience, and professionals working within the respective fields.

### Priority Area 1: Understanding Substance Misuse

According to the Centers for Disease Control and Prevention, “studies have reported an association between opioid prescribing and nonmedical use.” As you can see Reno Counties prescription rate has decreased over the last five years however, we are still higher than the Kansas average.

Figure 2: Opioid Prescription Rate

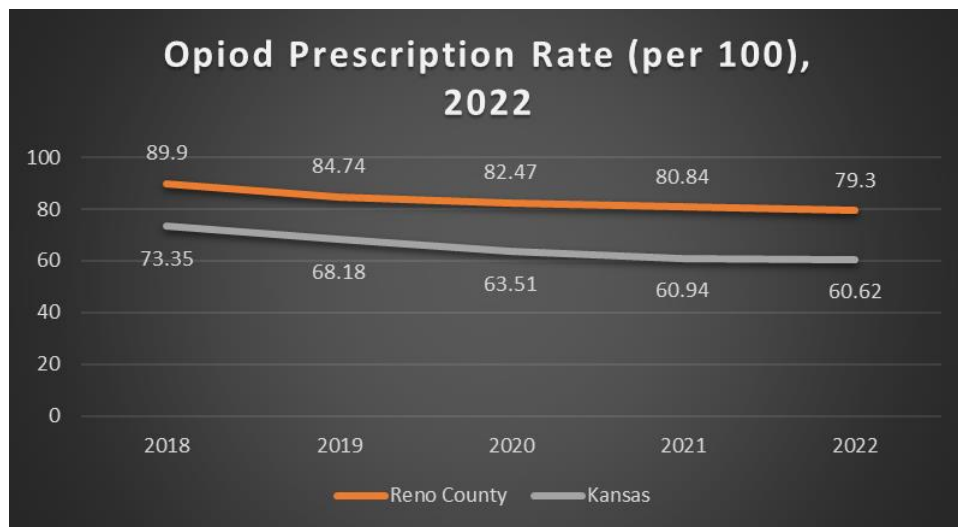


Figure 3: Stimulant Prescription Rate

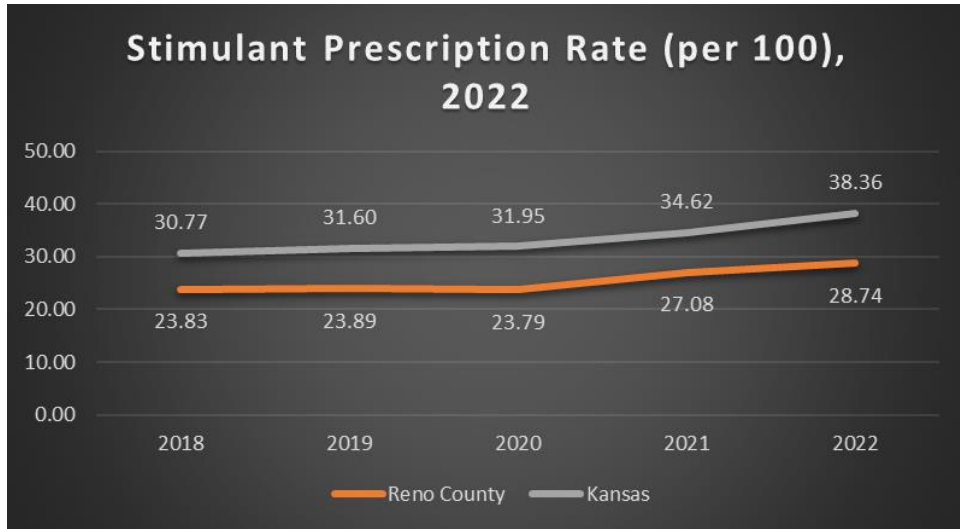
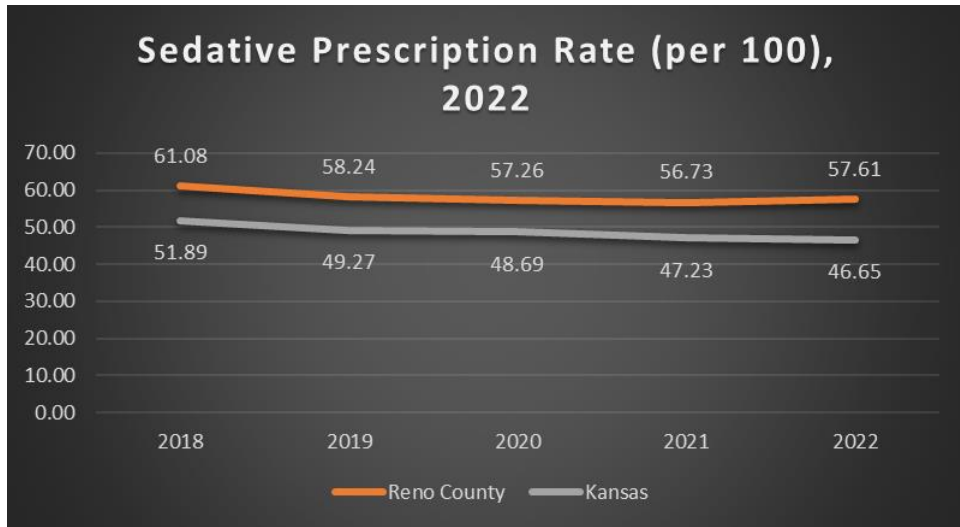


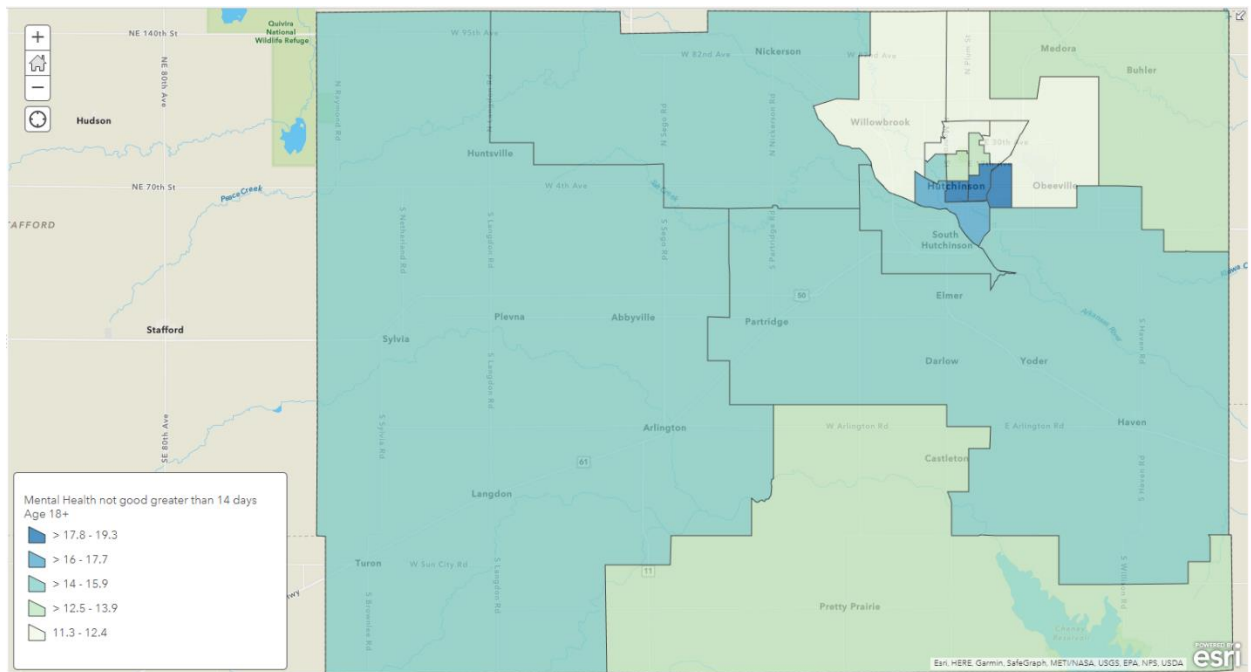
Figure 4: Sedative Prescription Rate



## Priority Area 2: Mental Health

In 2020, roughly 14.2 percent of Reno County residents reported poor mental health for 14 or more days.<sup>2</sup> According to the 2019 County Health Rankings, when compared to the rest of Kansas, Reno County is in the highest percentile of reported mentally unhealthy days within 30 days (Figure 5).

Figure 5: Percentage of Adults by Tract with Poor Mental Health for more than 14 Days (2019)

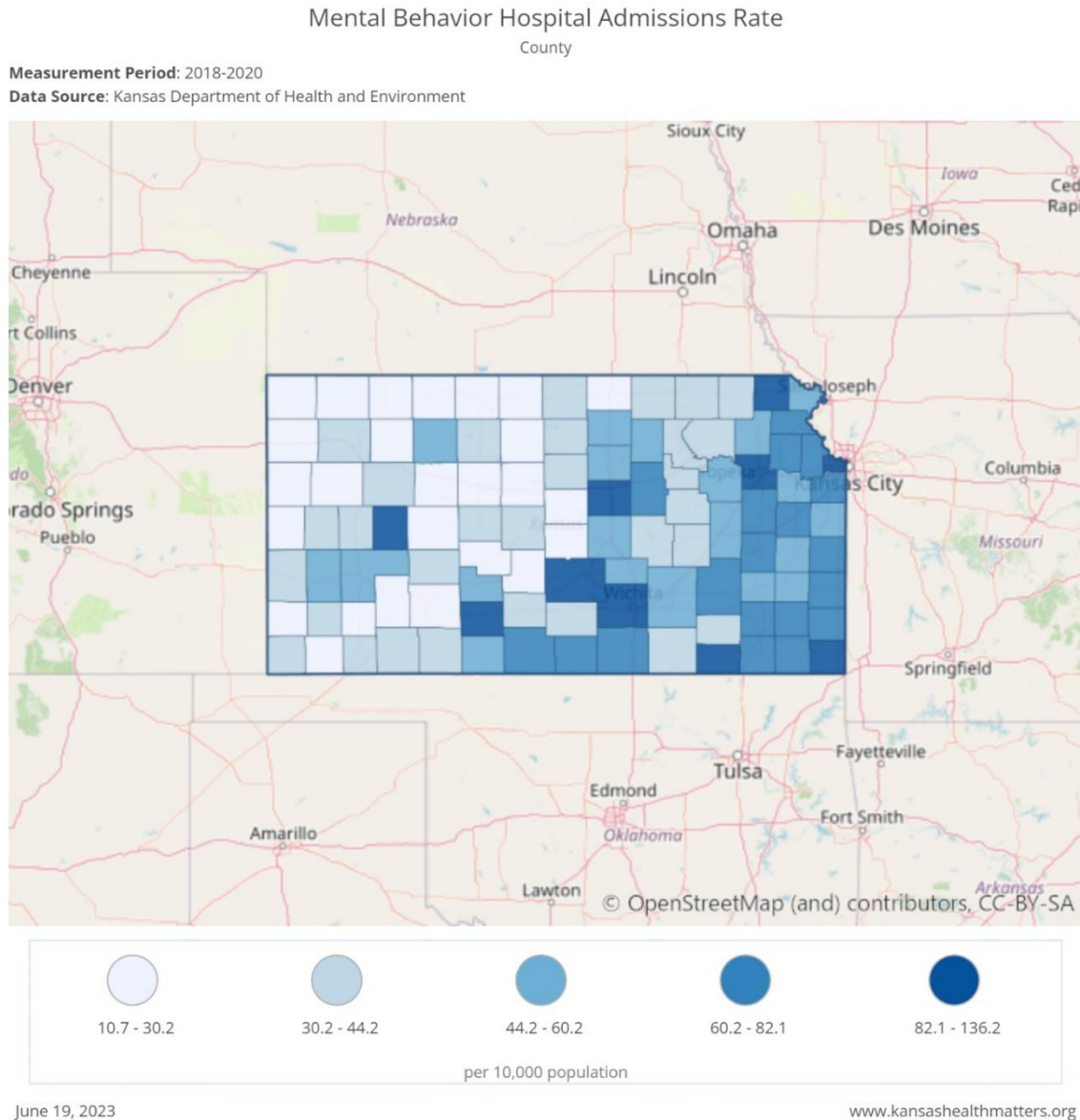


<sup>2</sup> Kansas Health Matters, "Poor Mental Health: 14+ Days," 2020, [Kansas Health Matters :: Indicators :: Poor Mental Health: 14+ Days :: County :: Reno](#)



Since 2011, Reno County generally rates higher than the state average for adults who were ever diagnosed with a depressive disorder reaching a peak of 19.4 percent in 2017.<sup>3</sup> Depressive disorders recognized in the data include depression, major depression, dysthymia, and minor depression. Between 2018 through 2020, approximately 93.2 per 10,000 residents in Reno County were admitted to a hospital for reasons related to mental behavior.<sup>4</sup>

Figure 6: Mental Behavior Hospital Admissions Rate (2016-2018)



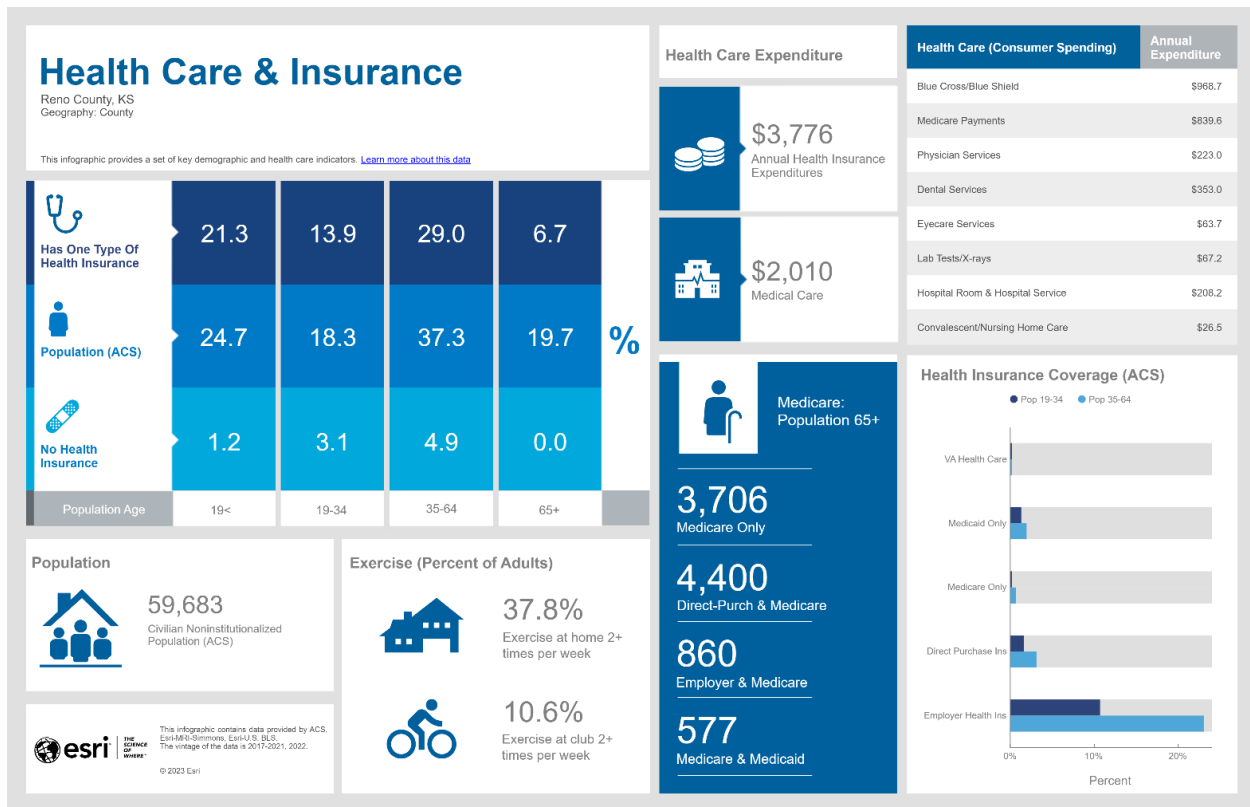
<sup>3</sup> Kansas Health Matters, “Percent of Adults Who Were Ever Diagnosed with a Depressive Disorder,” January 2019, <https://www.kansashealthmatters.org/indicators/index/view?indicatorId=2278&localeId=1017>

<sup>4</sup> Kansas Health Matters, “Mental Behavior Hospital Admissions Rate,” January 2020, <https://www.kansashealthmatters.org/indicators/index/view?indicatorId=6791&localeId=1017>

### Priority Area: 3 Access to Care

Over 9.4 percent<sup>5</sup> of Reno County residents do not have health insurance with the average household expenses on health insurance at \$3,776 annually. In comparison, the state averages an 8.8 percent uninsured population rate, with \$4,487 spent on annual health insurance expenditures. Overall, Reno County residents visit a doctor less frequently than the Kansas average and spend roughly \$700 less on total health care costs. The average household in Reno County also spends close to \$345 on prescription drugs compared to the Kansas average of \$390.

Figure 7: Health Care & Insurance Statistics



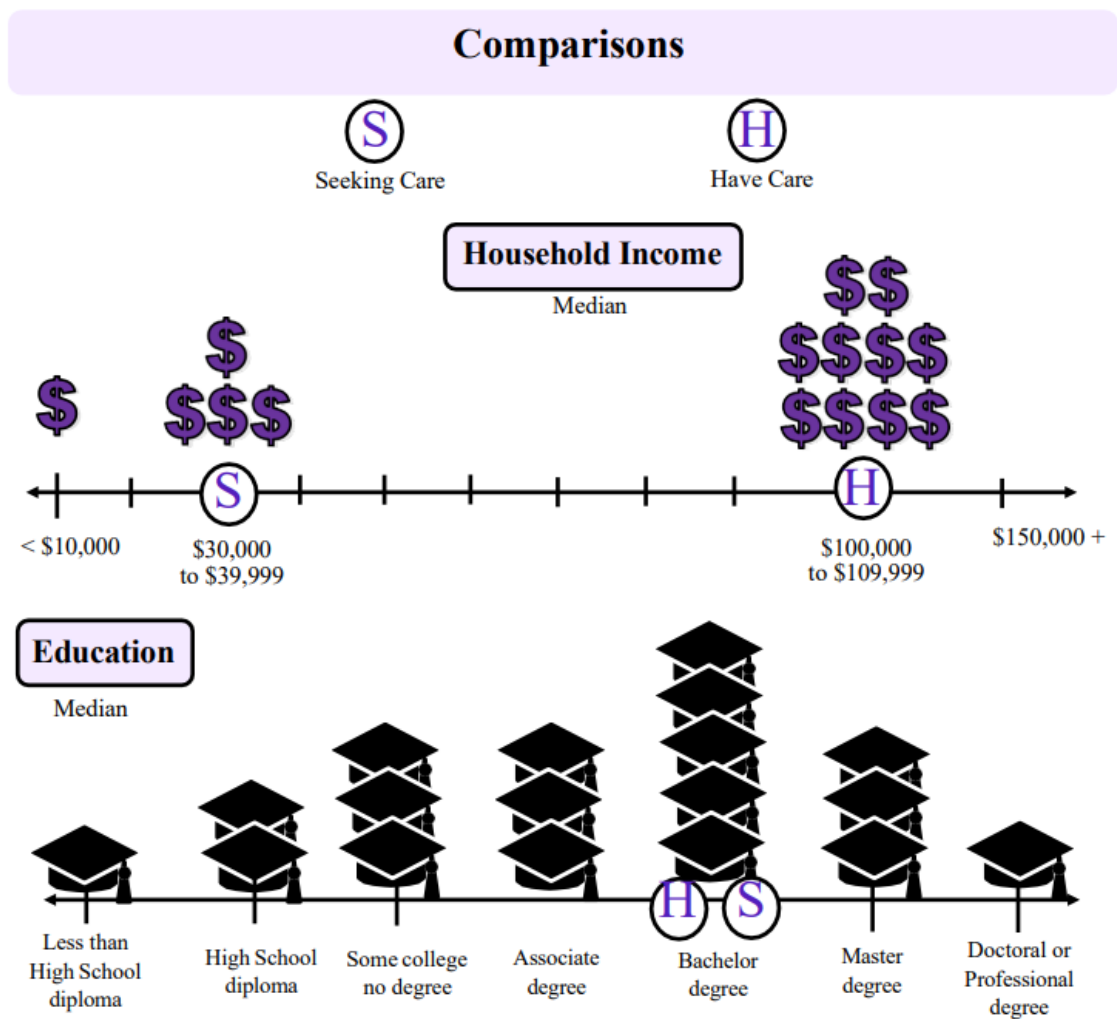
<sup>5</sup> [Health | Reno County Community Health Assessment \(arcgis.com\)](#)

## Priority Area 4: Childcare

In 2021 the Reno County United Way and Hutchinson Community Foundation funded a market study seeking a better understanding of the current state and needs for childcare in Reno County.

Reno County faces significant challenges for maximizing access to quality, affordable childcare. The communities in Reno County vary widely by population density, income, education, and existing early care and education capacity. The report highlights three major threats to meeting the early care and education needs for Reno County families: Pay inequities, cost of quality care and honoring childcare as a service to the community. To see the full report, go to: [https://rallyreno.org/wp-content/uploads/2023/02/Final\\_Reno\\_County\\_Full\\_Report-1.pdf](https://rallyreno.org/wp-content/uploads/2023/02/Final_Reno_County_Full_Report-1.pdf).

Figure 8: Pay and Education Childcare Inequities



## Strategies Priority Area 1: Substance Use

<b>Goal 1: Reno County Community Members will have a better understanding of the link between substance use and mental health</b>				
<b>Activities</b>	<b>Timeframe</b>	<b>Responsibility</b>	<b>Measurable</b>	<b>Potential Partners</b>
Activity 1.1.1: Support a marketing campaign by sharing information about the link between substance use and mental health	2023-2026	Reno Recovery Collaborative	# of individuals reached in outreach events # of outreach events	Horizons Mental Health Center Reno County Health Department
Progress:				
Activity 1.1.2: Develop advertising for the Reno Recovery Portal to encourage consumers struggling with substance use disorder to seek out care and engage in rehabilitation services.	2023-2026	Reno County Health Department Health Education Staff IT staff	# of website visits # of QR codes handed out # of QR code locations	United Way of Reno County Horizons Mental Health Center
Progress:				

<b>Goal 2: Reno County Employers will understand the benefits of hiring individuals with lived experience</b>				
<b>Activity</b>	<b>Timeframe</b>	<b>Responsibility</b>	<b>Measurable</b>	<b>Potential Partners</b>
Activity 1.2.1: Provide recommendations to businesses on employing, training, and retaining employees with a history of substance use disorder or lived experience	2023-2026	Reno County Health Department Kuhn Krause Collins Peer Mentors ADM - Work Release Program	# of educational presentations to businesses # of people reached by presentations	Society of Human Resource Members Reno County Chamber of Commerce Oxford House
Progress:				
Activity 1.2.2: Create a public-facing portal on common practices for hiring people with lived experience	2023-2026	Reno County Health Department Reno County Data Analyst Reno County IT Businesses who employ individuals with lived experience	A public web page	National Safety Council Reno County Chamber of Commerce Society of Human Resource Members
Progress:				

<b>Goal 3: Reduce the prescribed opioid impact in Reno County</b>				
<b>Activity</b>	<b>Timeframe</b>	<b>Responsibility</b>	<b>Measurable</b>	<b>Potential Partners</b>
Activity 1.3.1: The Opioid Stewardship Committee at HRMC will meet quarterly to ensure HRMC is at or below the 25% prescribing rate for opioids.	2026	Hutchinson Regional Medical Center	# of meetings	Reno County Health Department Hutchinson Clinic Dentists Prairie Star Health Center Other Health Care Entities who prescribe Opioids
Progress:				
Activity 1.3.2: The Opioid Stewardship committee will continue to invite the Health Department and consider other outside entities for input to quarterly meetings	2026	Hutchinson Regional Medical Center	# of outside entities attending quarterly meetings	Reno County Health Department Hutchinson Clinic Dentists Prairie Star Health Center Other Health Care Entities who prescribe Opioids
Progress:				

<b>Goal 4: Public Health and Safety Partners will have a better understanding of Emerging Drug Trends</b>				
<b>Activity</b>	<b>Timeframe</b>	<b>Responsibility</b>	<b>Measurable</b>	<b>Potential Partners</b>
Activity 1.4.1: Regularly meet with partners to communicate emerging drug trends.	2023-2026	Reno County Health Department Reno County Data Analyst Epidemiology	# of meetings held # of attendees	Public Safety Sector Medical Sector Treatment Sector
Progress:				
Activity 1.4.2: Monitor progress on identifying substances in Reno County via medical screening	2024-2025	Kansas Recovery Network Kansas Department of Health and Environment Substance Abuse Center of Kansas Oxford Houses	# of samples collected # of samples sent to KDHE # of samples analyzed	Hutchinson Regional Medical Center Reno County Health Dept
Progress:				

<b>Goal 5: Create a stronger recovery support system through the establishment of an overdose fatality review board (OFRB)</b>				
<b>Activity</b>	<b>Timeframe</b>	<b>Responsibility</b>	<b>Measurable</b>	<b>Potential Partners</b>
Activity 1.5.1: Develop interagency data sharing agreements	2023-2024	Reno County Health Department	# of signed data sharing agreements	Public Safety Sector Medical Sector
Progress:				
Activity 1.5.2: Establish regular meetings for the OFRB	2023-2026	Reno County Health Department Reno County Data Analyst	# of meetings held	Overdose Fatality Review Board Members
Progress:				
Activity 1.5.3: Recommendations from Overdose Fatality Review Board	2023-2026	Reno County Health Department Reno County Data Analyst	# of recommendations	Overdose Fatality Review Board Members
Progress:				
Activity 1.5.4: Establish a Governing board for the Overdose Fatality Review Board	2023-2026	Reno County Health Department Reno County Data Analyst	# of recruited members	Community members
Progress:				

## Strategies Priority Area 2: Mental Health

<b>Goal 1: Increase Mental Health Awareness/Care to reduce stigma and improve access to mental health resources.</b>				
<b>Activity</b>	<b>Timeframe</b>	<b>Responsibility</b>	<b>Measurable</b>	<b>Potential Partners</b>
Activity 2.1.1: Identify and build relationships with key local school staff and engage in strategic outreach with staff members	2023-2025	Horizons Mental Health School based Services; Participating school districts	# of schools participating	Reno County School Districts Principles Social workers Counselors
Progress:				
Activity 2.1.2: Be a resource of education for all Reno County schools by: <ul style="list-style-type: none"> <li>•Identifying best practices</li> <li>• Being a resource for Social Connectivity</li> <li>•Building a culture of mental wellness in schools</li> <li>•Research and influence local school policy related to mental health resources</li> <li>•Increasing collaboration between essential resources and local schools</li> </ul>	2023-2026	Horizons Mental Health School based Services Participating school districts	# of mental health trained staff in school setting	Reno County School Districts Rise Up Reno Trauma Informed Training
Progress:				
<b>Goal 2: Have a therapist or liaison in every school in Reno County</b>				
<b>Activity</b>	<b>Timeframe</b>	<b>Responsibility</b>	<b>Measurable</b>	<b>Potential Partners</b>
Activity 2.2.1: Create Role Clarification within the schools	2023-2026	Horizons Mental Health Center	# of therapists/positions in Reno County schools	Reno County School Districts
Progress:				

<b>Goal 3: Reduce the stigma of mental health issues within the Reno County Community</b>				
<b>Activity</b>	<b>Timeframe</b>	<b>Responsibility</b>	<b>Measurable</b>	<b>Potential Partners</b>
Activity 2.3.1: Increase the awareness of individuals/organizations through mental health learning. Provide resources to individuals/organizations and create productive connecting points for those who struggle with mental health.	2023-2026	Horizons Mental Health Center Reno Recovery Collaborative	# of presentations # of resources offered	Hutchinson Police Department Reno County Sheriff's Office Reno County EMS Hutchinson Fire Reno County Schools Reno County Businesses
Progress:				
Activity 2.3.2: Increase connections and support of groups affected by mental health	2023-2026	Horizons Mental Health ACT Team and Crisis Stabilization Team Milestone Clubhouse	# of connections	Reno County Health Department New Beginnings Hutchinson Clinic Prairie Star Health Center Stepping Up Council Substance Abuse Center of Kansas
Progress:				
Activity 2.3.3: Increase connections and support of individuals affected by mental health by hosting anti-stigma events, connecting with strategic consumers, and promoting all levels of conversation that increases the inclusion of those who struggle with mental illness	2023-2026	Horizons Mental Health Center Advisory Council Milestone Clubhouse	# of anti-stigma events hosted	Talk 20 ICE Trainings Suicide Prevention Collaborative Hutch Rec-Third Thursday Hutchinson Community College
Progress:				



**Goal 4: Strengthen partnerships between law enforcement and mental health providers/organizations to facilitate training and programs to redirect persons with mental illnesses from the criminal justice system to the mental health treatment system.**

<b>Activity</b>	<b>Timeframe</b>	<b>Responsibility</b>	<b>Measurable</b>	<b>Potential Partners</b>
Activity 2.4.1: Provide training and education for local law enforcement about mental health, including Mental Health First Aid training and support for Crisis Intervention Team (CIT)	2023-2026	Horizons Mental Health Center	# of trainings given to law enforcement	Hutchinson Police Department Reno County Sheriff's Office Reno County Corrections Office
Progress:				
Activity 2.4.2: Advocate for mental health resources utilizing the Justice System and Co-Responder Program	2023-2026	Horizons Mental Health Center Stepping Up Council Substance Abuse Center of Kansas	# of resources	Reno County Commissioners Hutchinson City Council Reno County Sheriff's Office State Level Outpatient Treatment Support
Progress:				
Activity 2.4.3: Create a transitional housing place and crisis intervention place for those coming out of jail and have data points for monthly reports	2023-2026	Carrefour Crisis Center Unhoused Conversation Group New Beginnings Hutchinson Police Department Reno County Sheriff's Department	# of unhoused jail population discharging to a housing option	Stepping Up Council Court System
Progress:				

**Goal 5: Explore funding for a diversion court for mental health consumers.**

<b>Activity:</b>	<b>Timeframe</b>	<b>Responsibility</b>	<b>Measurable</b>	<b>Potential Partners</b>
Activity 2.5.1: Research opportunities for a Mental Health Diversion court.	2023-2026	Stepping Up Council	Finding funding source	Reno County Judges Reno County District Attorney's Office
Progress:				

### Strategies Priority Area 3: Access to Care

<b>Goal 1: Develop a plan for free and reduced transportation to care</b>				
<b>Activity</b>	<b>Timeframe</b>	<b>Responsibility</b>	<b>Measurable</b>	<b>Potential Partners</b>
Activity 3.1.1: Work with RCAT to find opportunities for funding for free transportation.	2026	Healthcare Access Taskforce	# of discussions about free transportation. # of opportunities identified # of enacted opportunities	RCAT Medical Entities
Progress:				

<b>Goal 2: Provide equitable access to healthcare to all Reno County Residents</b>				
<b>Activity</b>	<b>Timeframe</b>	<b>Responsibility</b>	<b>Measurable</b>	<b>Potential Partners</b>
Activity 3.2.1: Medical entities will collaborate to offer satellite clinics	2026	HAT	# of clinics established	Medical Entities Not-For-Profits
Progress:				

<b>Goal 3: Recruit multiple medical disciplines to Hutchinson</b>				
<b>Activity</b>	<b>Timeframe</b>	<b>Responsibility</b>	<b>Measurable</b>	<b>Potential Partners</b>
Activity 3.3.1: Utilize multiple recruiting strategies	2023-2026	Healthcare Access Taskforce	# of new medical disciplines in Hutchinson	Medical Entities Chamber of Commerce
Progress:				

Strategies Priority 4: Child Care

<b>Goal 1: Provide Equitable and Affordable Childcare for Reno County Residents</b>				
<b>Activity</b>	<b>Timeframe</b>	<b>Responsibility</b>	<b>Measurable</b>	<b>Potential Partners</b>
Activity 4.1.1: Provide Grant funding to increase 0-5 childcare locations in Reno County	2023-2026	Reno County Childcare Taskforce	# of locations created # of grants received	Childcare Providers Hutchinson Community Foundation United Way
Progress:				
Activity 4.1.2: Establish shared service opportunities for all providers.	2026	Reno County Childcare Taskforce	Task Force data stating who and what is being performed for shared service and who is participating.	Childcare Providers
Progress:				
Activity 4.1.3: Coordinate purpose driven groups and collaboration among childcare service providers.	2026	Reno County Childcare Taskforce	System Map	Childcare Providers
Progress:				

## Monitoring and Evaluation

The Community Health Improvement Plan, CHIP, is a living document owned by the community. Progress toward the specific activities will be recorded in the above section plans as they occur.

Reno County Health Department will collect quarterly progress toward activities, strategies, and goals as work is completed and will inform the community, healthcare access taskforce, and workgroups of progress both formally and informally.

To keep the work flowing and the direction in mind, there will be a status report generated and published by the end of May each year the CHIP is active. During this time, there will be a progress evaluation and feedback opportunity for the community and stakeholders.

## Summary and Next Steps

In the fall of 2024, stakeholders will begin planning the survey for the next Community Health Assessment, CHA, which will be conducted in 2025. The CHA will help distinguish health priority areas of most importance to Reno County residents and assist in measuring our success in carrying out our objectives within the 2020 CHIP.

## Executive Summary

Reno County is a vibrant community that has many collaborative partners to address community health topics. The Community Health Improvement Plan affords us the opportunity to make progress on health and economic issues that can help residents be healthier and families thrive which leads to economic stability of our community and state. The actions and priorities in this document are being implemented across many sectors utilizing real time data to track results that inform success of services.

Community partners are engaged and are focused to achieve health services for all ensuring equal opportunities to engage in learning, living, working, and playing. Everyone living and working in Reno County plays a role in supporting this task. Through volunteer involvement, voting, and support of healthy environments throughout our community we can achieve better health for all residents.

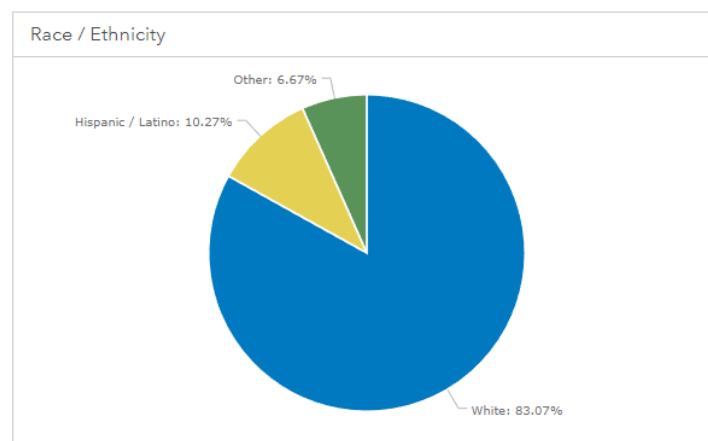
In the fall of 2024, stakeholders will begin planning the survey for the next Community Health Assessment (CHA), which will be conducted in 2025. The CHA will help distinguish health priority areas of most importance to Reno County residents and assist in measuring our success in carrying out our objectives within the 2020 CHIP.

## Appendix A

### Demographics

Reno County is geographically one of the largest counties in Kansas (1,255 square miles) with a total population of 61,898.<sup>6</sup> It is home to Hutchinson—the county seat—with a population of 40,006<sup>7</sup> and several small surrounding communities. Reno County is the 9th most populated county in the state of Kansas out of 105 counties. The median household income for Reno County is \$50,675<sup>8</sup> and for Hutchinson \$52,277<sup>9</sup>, both of which are below the state’s rate of \$61,084. As the third largest rural county in Kansas, residency is 83% Caucasian, 10% Latino, and 3% African American.

Figure 9: Race/Ethnicity in Reno County<sup>10</sup>



Rural Reno County is home to a significant number of Amish families who are traditionally dependent upon agriculture and value a minimalist lifestyle. In 1992, there were three Amish settlements in Kansas with an estimated total population of 675.<sup>11</sup> As of 2022, there are ten settlements with a population of 2,230.<sup>12</sup>

Hutchinson has three state prison facilities (minimum, medium, and maximum security) that provide steady employment for many. Additionally, an estimated 94 manufacturing businesses operate within Reno County, employing 3,252 persons.

<sup>6</sup>P1: RACE - Census Bureau Table

<sup>7</sup> Hutchinson Kansas population - Census Bureau Tables

<sup>8</sup> Demographics | Reno County Community Health Assessment ([arcgis.com](https://arcgis.com))

<sup>9</sup>S1901: INCOME IN THE PAST 12 MONTHS ... - Census Bureau Table

<sup>10</sup> Demographics | Reno County Community Health Assessment ([arcgis.com](https://arcgis.com))

<sup>11</sup> "Amish Population Change 1992-2013, Top Ten States," *Young Center for Anabaptist and Pietist Studies*, Elizabethtown College, [Population Change 1992-2017.pdf](https://etown.edu/population-change-1992-2017.pdf) ([etown.edu](https://etown.edu))

<sup>12</sup> "Amish Population, 2019," *Young Center for Anabaptist and Pietist Studies*, Elizabethtown College, [Amish Studies](https://etown.edu/amish-studies) ([etown.edu](https://etown.edu))

Figure 10: Demographics & Trends in Reno County

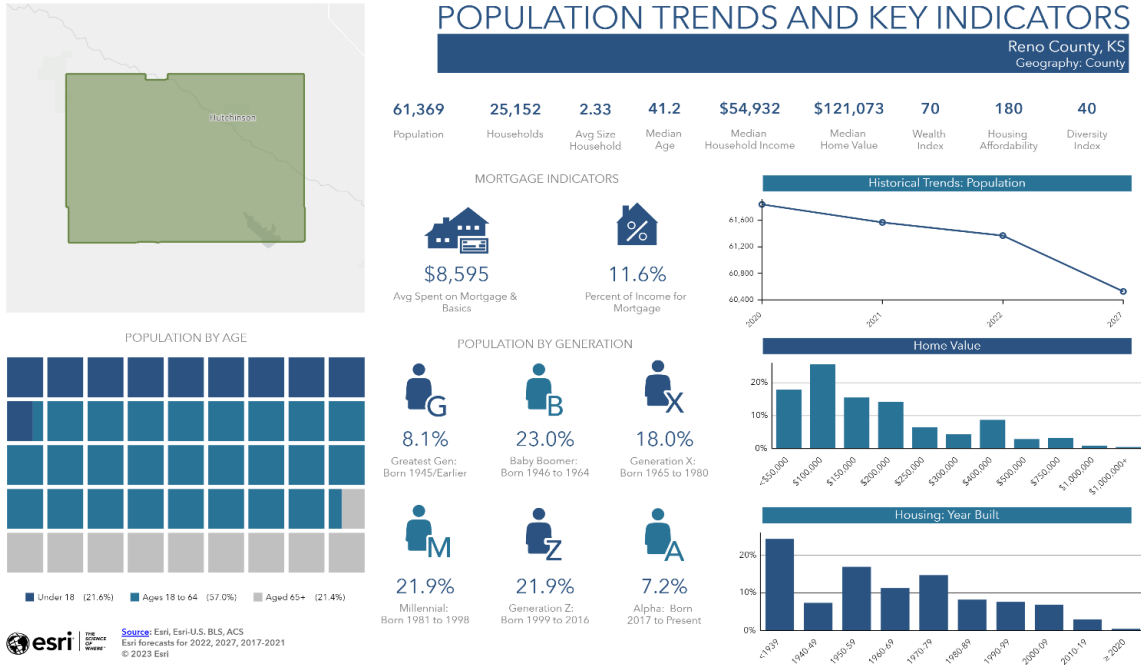
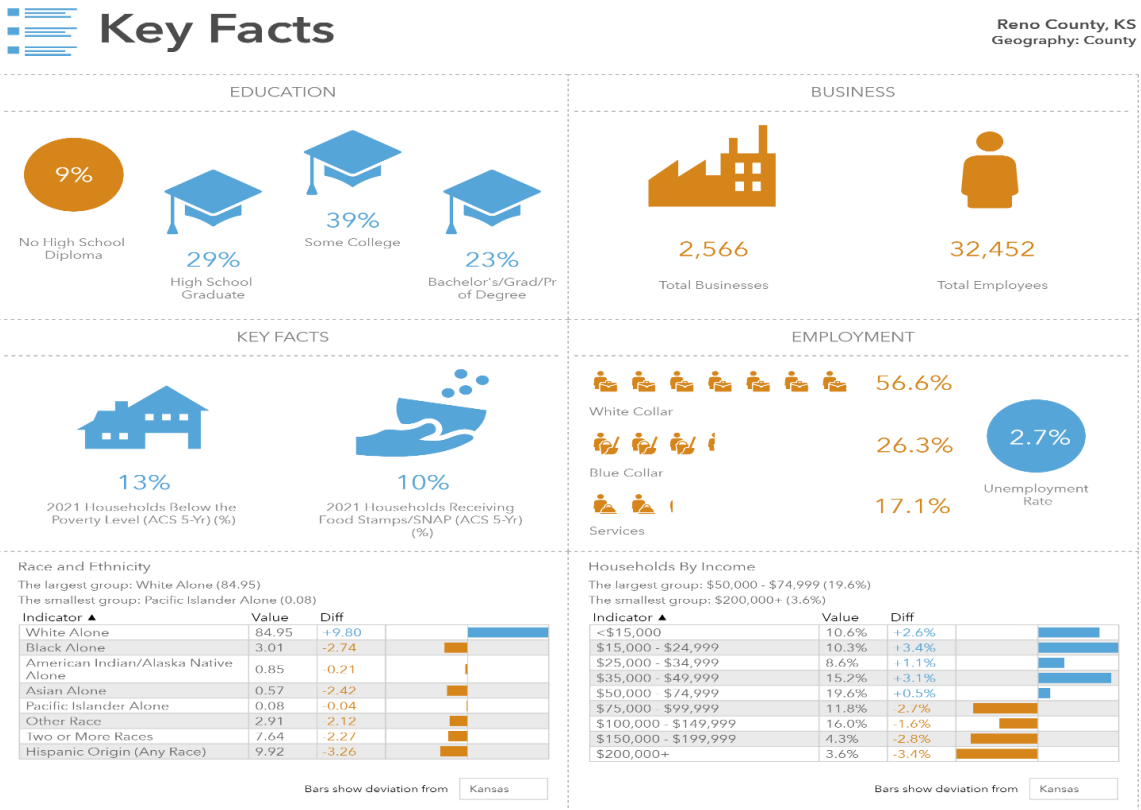


Figure 11: Reno County Key Facts

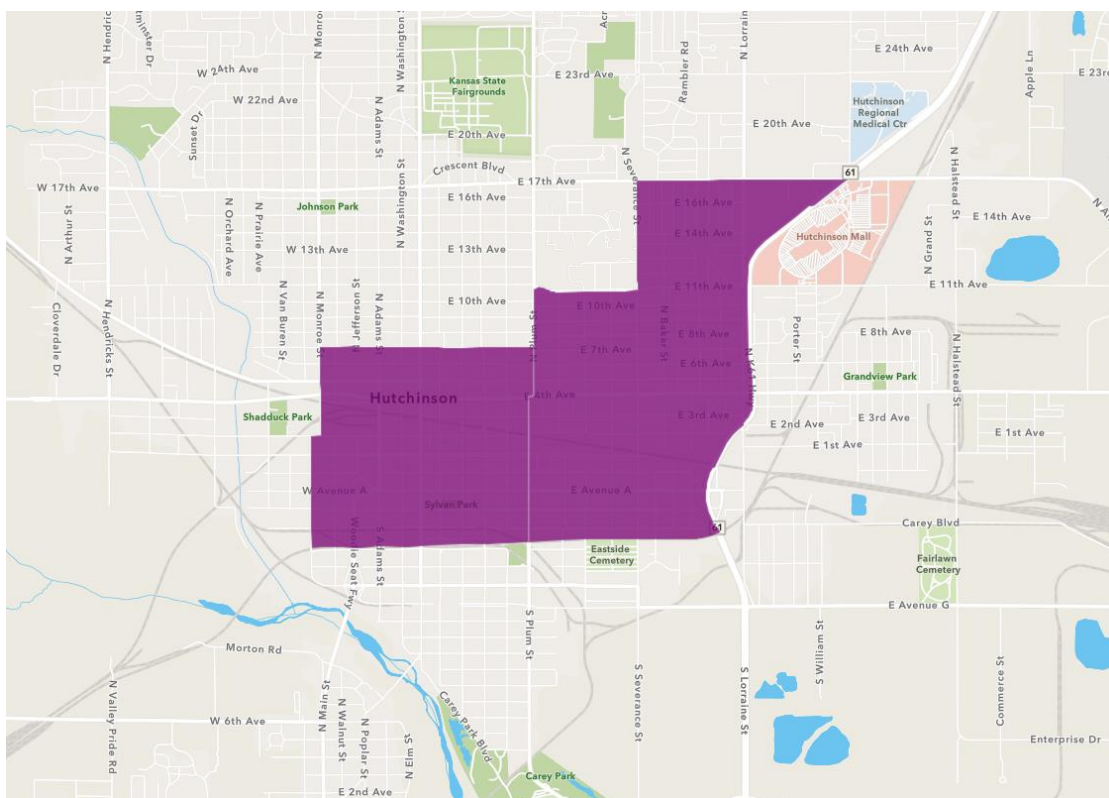


## Socioeconomic Factors

The Center for Applied Research and Engagement Systems identifies vulnerable populations as areas where 20 percent or more of the inhabitants are living in poverty and/or 25 percent of the population age 25 or older hold less than a high school diploma. In 2022, the federal poverty level for a family of four was \$27,750.<sup>13</sup> Higher poverty rates are often attributed to poor economic conditions or lack of economic opportunity. The estimated 2019 poverty level in Reno County is slightly higher than the Kansas average—each at 13.5 and 12 percent<sup>14</sup>, respectively.

There are two census tract areas located in south-central Hutchinson, where more than 20 percent of all households are living below the federal poverty line.

Figure 12: Census Tracts - 20 Percent or More of Population Living in Poverty

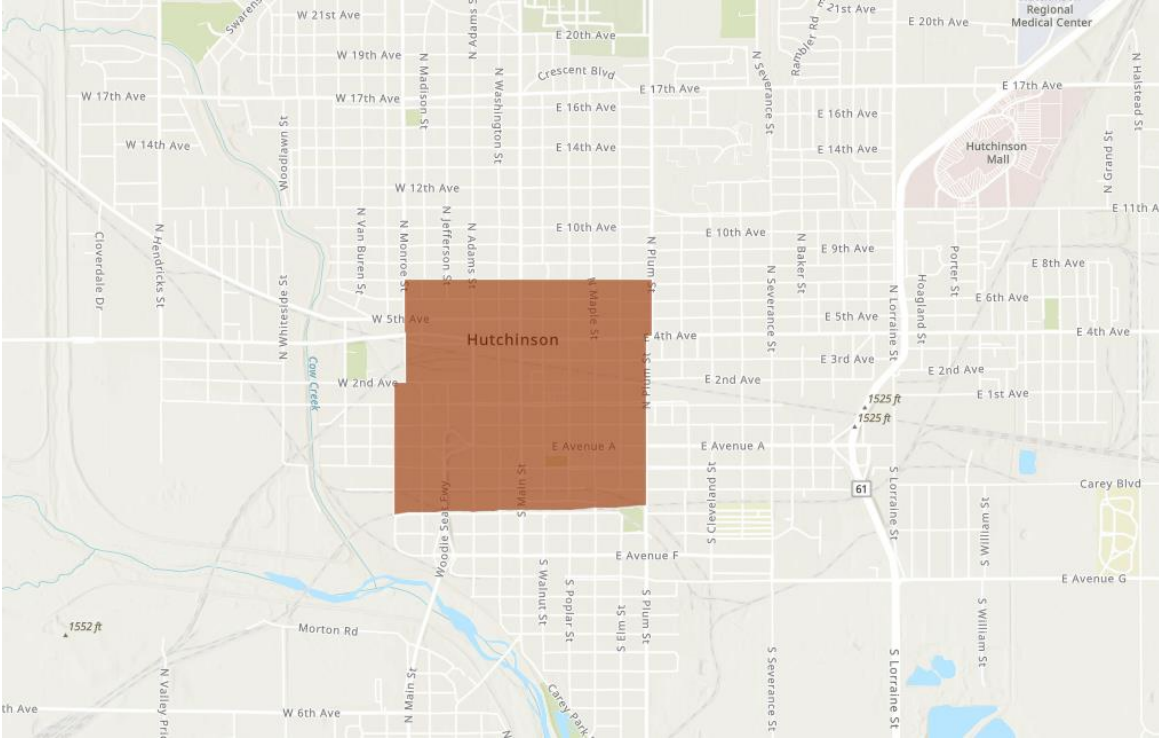


<sup>13</sup> [Federal Poverty Level \(FPL\) - Glossary | HealthCare.gov](#)

<sup>14</sup> [Demographics | Reno County Community Health Assessment \(arcgis.com\)](#)

There is one census tracts where more than 20 percent of the population have less than a high school diploma.

Figure 13: Census Tract - 20 Percent or More of Population with Less Than a High School Diploma



One census tract in Hutchinson meets both thresholds. In total, two census tracts within Hutchinson are identified as socially vulnerable populations.



## Food Environment

According to Kansas Health Matters, 11.3 percent of Reno County residents experience food insecurity compared to the Kansas rate of 9.7 percent. “Food insecurity is an economic and social indicator of the health of a community. The US Department of Agriculture defines food insecurity as limited or uncertain availability of nutritionally adequate foods or uncertain ability to acquire these foods in socially acceptable ways.” In Reno County, unless you live in one of three towns you do not have access to a local grocery store. Additionally, 11.7 percent of Reno County Residents live below the poverty level, (U.S Census Bureau, 2021 ACS 5 yr. estimate). This creates another barrier when there is not a local food system, especially for our rural residents.

The average household in Reno County spends about \$1,669 on groceries per person each year. Data from Esri and GfK MRI in Figure 14 illustrates average annual household spending on grocery items, where the single largest purchasing category (32 percent) are snacks. Additionally, nearly 36 percent of Reno County residents went to a fast-food restaurant more than nine times within 30 days. While the recommended calorie intake can range anywhere from 1,600 to 3,000 calories based on factors such as age and sex, one trip to a fast-food restaurant can account for more than half of the daily recommended calorie intake. These lifestyle behaviors contribute to higher rates of obesity and other preventable chronic diseases such as cardiovascular disease and type 2 diabetes. In Reno County, 35 percent of Reno County residents are obese.<sup>15</sup>

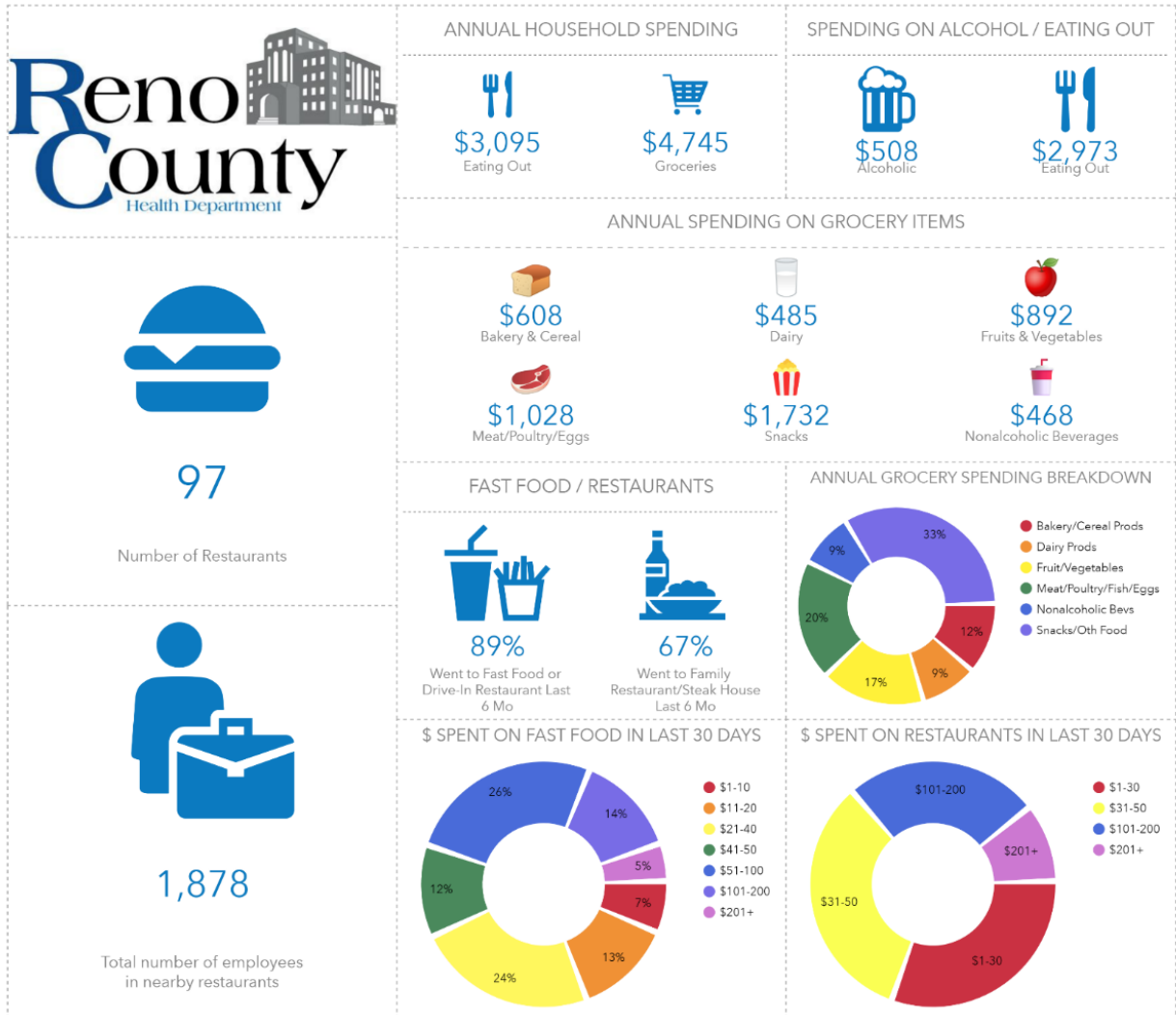
A healthy diet is known to reduce the risk of chronic diseases, such as obesity. At the same time, nationally, less than 10 percent of the population meets the recommendations for the intake of fruits and vegetables.<sup>16</sup> Access to healthy food sources is a common barrier within the Reno County community. The Reno County Food Advisory Board is working on a food system assessment for Reno County and will work on identifying key strategies to address the gaps in food security over the next 5 years.

---

<sup>15</sup> Kansas Health Matters, 2017, “Percent of Adults who are Overweight,” [Kansas Health Matters :: Indicators :: Percent of Adults who are Overweight :: County : Reno](#)

<sup>16</sup> Centers for Disease Control and Prevention, 2020, “Poor Nutrition,” [Poor Nutrition | CDC](#)

Figure 14: Food & Grocery Spending



Source: This infographic contains data provided by Esri-U.S. BLS, Esri-MRI-Simmons. The vintage of the data is 2022.

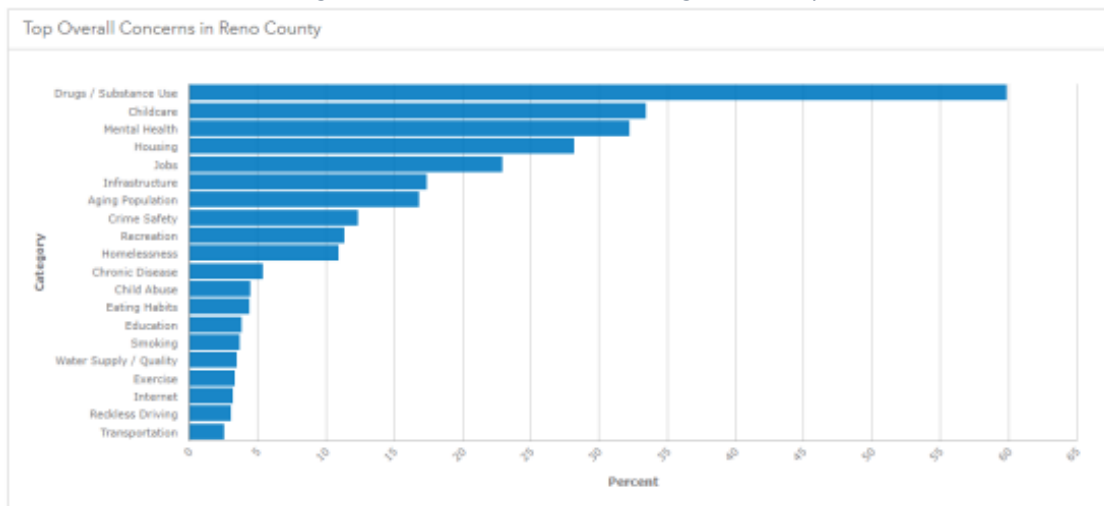
## Appendix B

### Overview of the 2022 Community Health Assessment

In 2022, a Community Health Assessment (CHA) was conducted. There were 796 responses to the survey with 319 people providing explanations about why they chose their answers. The local priority-setting scores ascertained in the CHA show the top social/behavioral issues facing Reno County include drug/substance use, mental health, childcare and access to care.<sup>17</sup>

Through the community input of the CHA, the Healthcare Access Taskforce (HAT) along with help from several community partners and Heal Reno County with the help of Pathways to a Healthy Kansas grant funds completed several community listening sessions to gain more input from community members. Information from the focus groups supported the data we received in the CHA survey and from there the healthcare access taskforce was able to work with existing community groups whose focuses were on the community priorities. If you would like to see the full report, please go to: <https://renocountycha-reno.hub.arcgis.com/>

Figure 15: CHA - Overall Concerns Facing Reno County



<sup>17</sup> [Reno County Community Health Assessment \(arcgis.com\)](https://renocountycha-reno.hub.arcgis.com/)

Figure 16: CHA - Health Concerns Facing Reno County

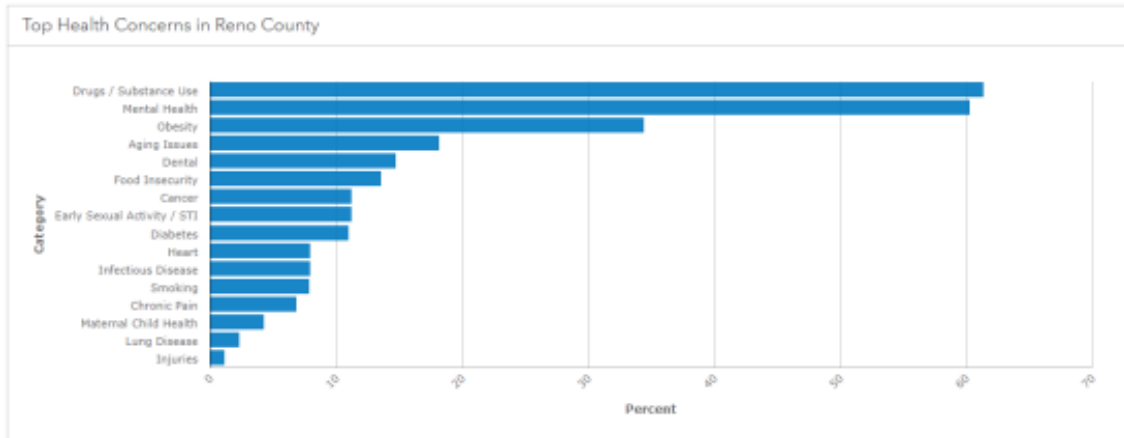
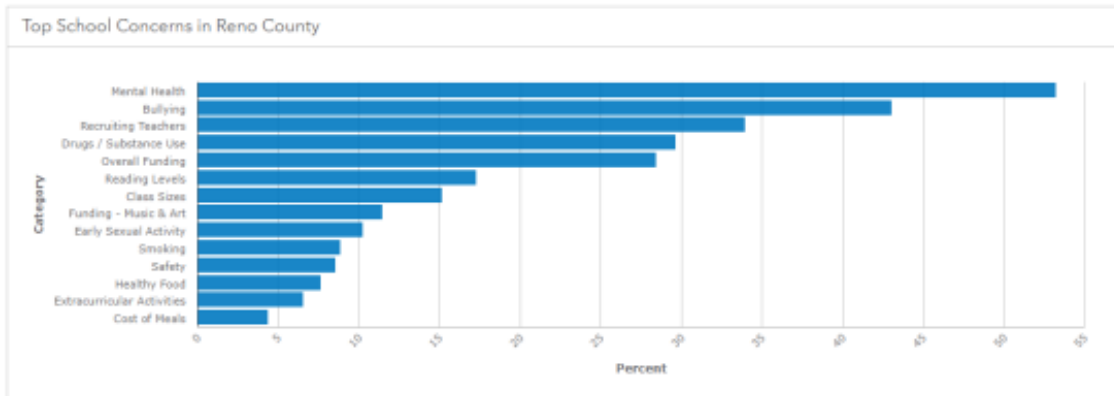


Figure 17: CHA - School Concerns Facing Reno County



The CHA results also reveals households where a family member struggles with mental health (Figure 18).

Figure 18: CHA - Household Struggles with Mental Health

